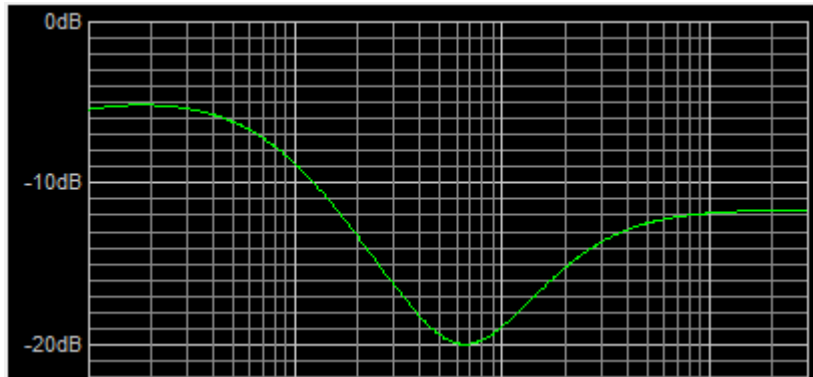


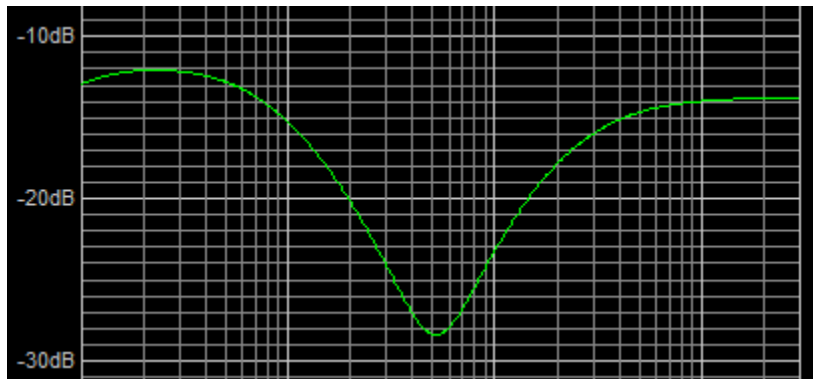
Fender FTSMBD Tone Stack Modification Kit for Fender Blues Deluxe and Blues DeVille, (All Versions)

This modification kit is designed to change the tone stack in the above amplifiers to the tone stack design used in the Fender Twin Reverb. Many consider the tone in these amps to be a bit “honking” in the mid-range and less defined in the bass and treble regions. This mod provides more of a “scooped” midrange and more articulate bass and treble.

The graphs below demonstrate the difference. Bass, treble, and mid controls set at their midpoint in both graphs:



The above display shows the frequency response of the stock Blues Deluxe and DeVille, with a wide dip in the midrange, lower treble response, and a boomy bass response.



This display shows the response after modification. A narrower, more defined mid scoop, much improved treble response for the classic Fender 'chime', and better balance between bass and treble, making for a less boomy sound. This graph is the classic Fender sound.

Remember to unplug the amplifier before starting work, and then to discharge the filter capacitors on the main board for safety. If you are uncertain about this, we recommend

obtaining the help of a qualified amp technician. The first task is to disassemble the amplifier chassis. The best way to learn how to do this is by watching the video at <https://tinyurl.com/bluesdel>. The amplifier in the video is a Fender Hot Rod Deluxe, but the process is the same.

A desoldering tool (suction pump) and/or desoldering braid is recommended for desoldering the old potentiometers. The traces on the PC can be fragile, and may lift off the board unless care is taken. Please be sure to have a good quality soldering iron with sufficient heat so that you do not overheat the PC traces.

Also, be careful when folding the board forward to access the printed side to remove the pots. The ribbon cables going to the tube PC board can be fragile, and excessive pressure or movement can break the ribbon cable conductors.

Remove one pot at a time, and then replace it with the one provided of the new value.



Locations of the new pots and the new values:

Blues Deluxe and Blues Deville (1993-2004):			
A10K	R14 Middle	A250K	R13 Bass

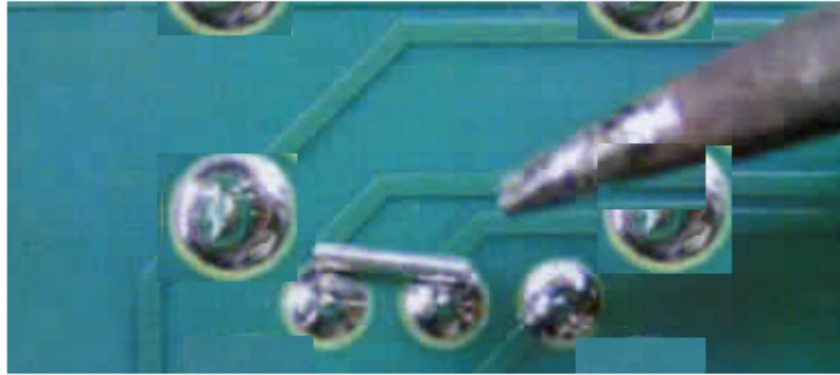
Reissue Blues Deluxe and Blues Deville (2005-Present):			
A10K	R15 Middle	A250K	R14 Bass

(The old values were B25K for the middle pot, and A1M for the Bass Pot).

In addition, one 0.047/630V capacitor is provided. This capacitor replaces the existing 0.022uF/400V capacitor at location C7 in the original Blues Deluxe and Deville (C6 in the reissue versions), right behind the bass control. It is easiest to remove the bass control first, then remove and replace this capacitor, then install the new A250K bass control.

In addition, the mid pot needs to be changed from potentiometer wiring to variable resistor wiring in order to match the circuit of the Twin Reverb. In order to do this, two terminals on the mid pot are bridged together. You can use a scrap piece of wire for doing this operation. See the next picture on the next page for details.

Bridge two terminals of the mid pot as shown.



FRONT OF PC BOARD

Make sure you bridge the correct terminals on the pot – the center and the left terminal, as you face the PC board with the front of the board at the bottom, as shown in the picture. Also make sure you select the correct pot on which to bridge – look at the front panel on the amp to locate the mid pot and count how many pots over from the end the mid pot is located. Then, count the same number of pots over from the end on the PC board.

Reassemble and test the amplifier.

Studio Sound Electronics

www.amprepairparts.com

Clearwater, Florida USA